

**C. K. E & I Engineering Sdn. Bhd.**

---

(Company No: 254206-D)



**C. K. E & I ENGINEERING SDN BHD**

**NO. 33 • JALAN USJ 19/2 • 47630 SUBANG JAYA  
SELANGOR DARUL EHSAN • MALAYSIA  
TEL:+603-8023 1998 / 1993 • FAX:+603-8023 1989 • URL : <http://www.ck-eni.com.my>**



## **Table Of Contents**

---

- 1.0 Executive Summary
- 2.0 Our Mission
- 3.0 Corporate Information
- 4.0 Board of Directors
- 5.0 Organizational Structure
- 6.0 Scope of Work
- 7.0 Current and Completed Projects



## EXECUTIVE SUMMARY

---

---

The company began its inception as a sole proprietorship in 1987 operating from an office located at Subang Jaya. It was initially involved in the electrical and plumbing works at which time, it was known as C.K. Ching Electrical Services. Apart from the basic electrical works it was involved with, it started to diversify into the field of instrumentation and explosion-proof electrical works.

It then obtained its first breakthrough in 1991 by performing instrumentation works when it was appointed as one of the subcontractors to Showa Denki (M) Sdn Bhd. for the Titan Himount Polymer project located at Pasir Gudang, Johor.

Since then, it has been involved in two other successive instrumentation projects, also under the auspices of Showa Denki (M) Sdn. Bhd. in the MTBE and SMDS project in Kuantan and Bintulu, Sarawak respectively. By late 1992, expansion was necessary thus the initial sole proprietorship was changed to a private limited company known as [C.K. E & I Engineering Sdn. Bhd.](#)

With its focus, experience and expertise in both instrumentation and electrical works, the company is looking forward to provide good and efficient services on these related fields of work to whosoever requires quality-engineering works.



## OUR MISSION

A decorative graphic consisting of a grey horizontal bar with the text 'OUR MISSION' in bold black letters. Below the bar are two parallel blue lines that end in a blue arrow pointing to the right.

It is our utmost priority here at **C.K. E & I Engineering Sdn Bhd** to strive to our very best in order to determine and implement solutions for our clients' needs in the areas of electrical, instrumentation and structural cable engineering.

Due to its inextricably complex and diverse nature of the engineering industry, we have assembled a team of talented and resourceful engineers from various engineering disciplines to aid our clients in the design, construction and implementation of our products and services. We are committed to the delivery of every project we undertake in the most efficient, cost effective and timely manner possible.

This level of commitment and service has earned **C.K. E & I Engineering Sdn Bhd** a strategic position among the competitive engineering companies. We believe that our success is a direct result from the understanding of our business, a high-level of client response turnaround time and a highly spirited, capable and committed team of dedicated personnel.

We are positioned to better relate the principles and technology to be applied to local conditions and to specifically address critical issues in relation to the success of the project.



## CORPORATE INFORMATION

|                                 |   |  |
|---------------------------------|---|--|
| <b>Company Name</b>             | : | <b>C.K. E &amp; I ENGINEERING SDN. BHD.</b>  |
| <b>Date of Incorporation</b>    | : | 17 <sup>th</sup> December 1992   |
| <b>Company Address</b>          | : | No 33, Jalan USJ 19/2, 47630 Subang Jaya,<br>Selangor Darul Ehsan, Malaysia.   |
| <b>Tel</b>                      | : | 603-8023 1998 / 1993   |
| <b>Fax</b>                      | : | 603-80231989   |
| <b>E-mail</b>                   | : | <a href="mailto:ckching@ck-eni.com.my">ckching@ck-eni.com.my</a>   |
| <b>Company Registration No.</b> | : | 254206-D   |
| <b>Authorized Capital</b>       | : | RM250,000.00   |
| <b>Paid Up Capital</b>          | : | RM250,000.00   |
| <b>Company Auditor</b>          | : | <b>TOH SECK HOON &amp; CO.</b><br>A212, No. 11, Jalan Sepadu,<br>Taman United, 58200 Kuala Lumpur,<br>Malaysia.                  |
| <b>Company Secretary</b>        | : | <b>AG MANAGEMENT SERVICES</b><br>Suite 512, 5th Floor, Kwang Tung Building,<br>44, Jalan Pudu, 55100, Kuala Lumpur,<br>Malaysia. |
| <b>Banker(s)</b>                | : | <b>MAYBANK BHD</b><br>USJ TAIPAN<br>Subang Jaya  |
|                                 | : | <b>RHB BANK BHD</b><br>USJ TAIPAN<br>Subang Jaya   |
| <b>Company Directors</b>        | : | <b>Managing Director</b> : Ching Chee Keong<br><b>Director</b> : Ching Chee Wah  |



## **CORPORATE INFORMATION**

---

---

### **Business Activities**

#### **A) Construction for : -**

1. Explosion-proof Electrical Works.
2. Instrumentation Works.
3. General Electrical Works (Building, Factory & Etc.)
4. Heavy Machinery Relocation.
5. Fire Fighting.
6. Installation of Fiber Optic Network System.
7. Security Systems

#### **B) Material Supply for : -**

1. Electrical Materials.
2. Instrumentation Materials.
3. Equipment.
4. Tools & Other.

#### **C) Fiber Optic Equipment & Accessories.**

#### **D) Man Power Supply**



## BOARD OF DIRECTORS

**NAME** : CHING CHING KEONG  
**DESIGNATION** : Managing Director  
**NATIONALITY** : Malaysian  
**ACADEMIC QUALIFICATION** : DIPLOMA IN ELECTRICAL ENGINEERING  
**Office Tel** : (603) 8023 1993  
**Mobile** : (6019) 339 4833  
**Email** : ckching@ck-eni.com.my

### PROFILE :

Highly qualified Executive Manager offering more than 20 years of E & I Engineering experience within project management and executing projects in the Oil and Gas industries.

### AREA OF EXPERTISE:

Electrical Engineering

Instrumentation Engineering

### PROFESSIONAL EXPERIENCE :

#### C.K. E & I Engineering Sdn Bhd (1992 – Present)

#### Duties:

- Directly involved in all the day-to-day operations aspect of the companies above.
- Overseeing all financials, business developments, sales & marketing, production, human resources and administrative affairs.

#### Accomplishments:

- Successfully completed 25 Electrical & Instrumentation projects worth approximately RM50 million.
- Specializing in Electrical & Instrumentation Project Management and sub contracting works.



## BOARD OF DIRECTORS

**NAME** : Ching Chee Wah  
**DESIGNATION** : Director  
**NATIONALITY** : Malaysian  
**ACADEMIC QUALIFICATION** : DIPLOMA IN ELECTRICAL ENGINEERING  
**Office Tel** : (603) 8023 1993  
**Mobile** : (6016) 339 1339  
**Email** : cheewah78@gmail.com

### PROFILE :

Motivated, results-driven operations manager with extensive experience across multiple industries including construction, electrical, local area networking and oil/gas. Proven performer and profit "maximizer," skilled in capturing dominant market share, growing sales revenue to million-dollar levels, and negotiating cost-saving initiatives reducing overhead by tens of thousands of dollars. Demonstrated success in customer/vendor relationship management, with ability to quickly build genuine rapport and secure competitive contract wins. Hands-on experience in purchasing/inventory control/budgeting, with a reputation for dedication, creative problem solving, and outstanding service.

### AREA OF EXPERTISE :

E & I Technical / Engineering

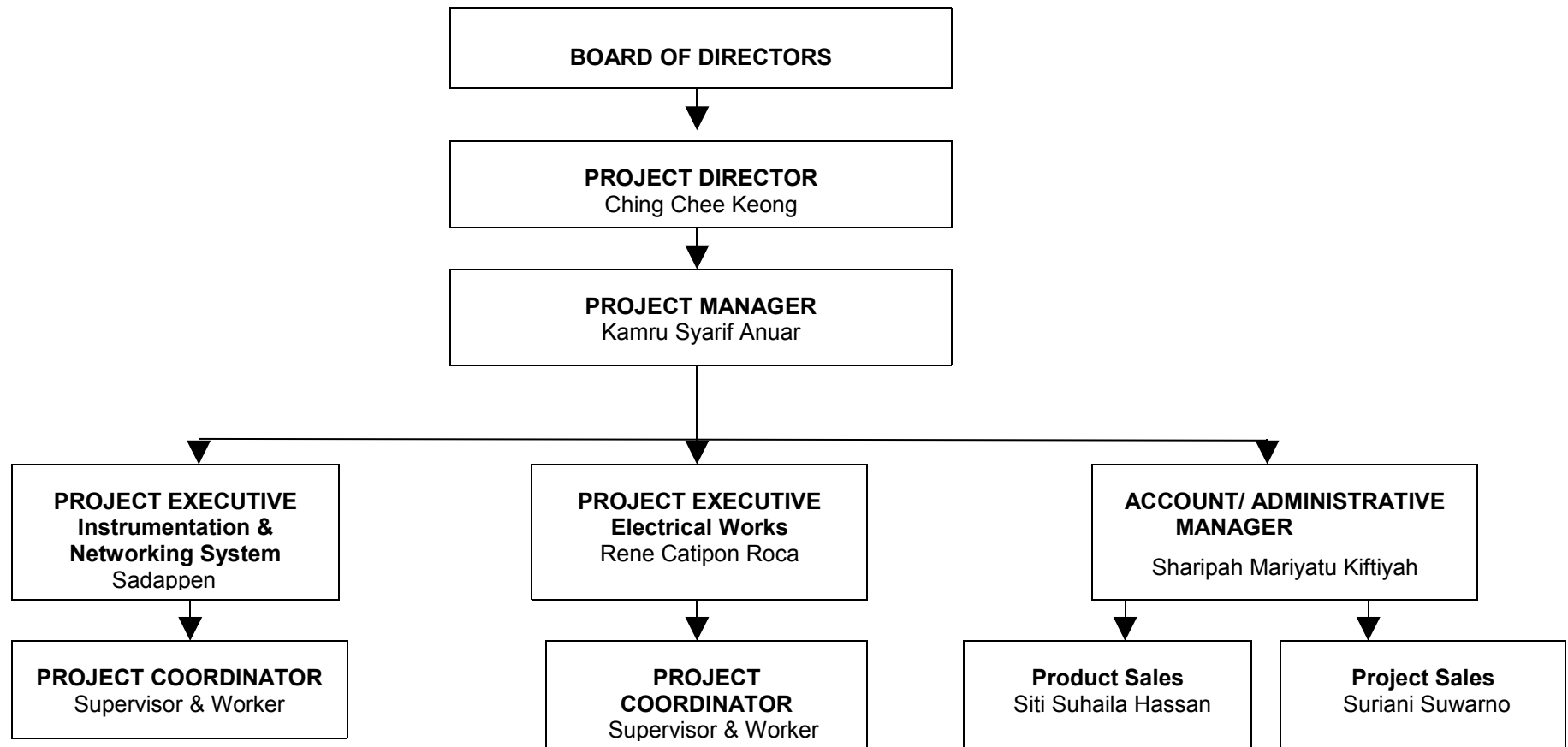
### Accomplishments:

- Successfully completed 10 Electrical & Instrumentation projects worth approximately RM10 million.
- Specializing in Electrical & Instrumentation Project Management and sub contracting works.





• ORGANIZATIONAL STRUCTURE







## SCOPE OF WORK

**C.K. E & I Engineering Sdn Bhd** is centered on three main business segments as listed below as our fields of expertise. **C.K. E & I Engineering Sdn Bhd** also provides project management and construction team work in all the fields of expertise listed below.

**C.K. E & I Engineering Sdn Bhd** provides electrical engineering, construction and maintenance services to commercial, industrial, petroleum and petro-chemical industries. **C.K. E & I Engineering Sdn Bhd** will bid lump sum work to furnish material and labor for construction projects.

- **POWER AND LIGHTING SYSTEMS**
- **TRANSFORMER AND SWITCHGEAR**
- **CABLE LADDER / TRAY SYSTEMS**
- **EARTHING SYSTEM**
- **LIGHTNING SYSTEM**
- **CONSTRUCTION MANAGEMENT SERVICES**
- **ELECTRICAL MAINTENANCE SERVICES**



### **WESTERN DIGITAL – ELECTRICAL WORKS**

Supply and install HT & LV electrical works for Clean room environment.



## SCOPE OF WORK

---

With C.K. E & I Engineering Sdn Bhd involvement in the oil and gas sector, instrumentation plays a critical role in the various processes. C.K. E & I Engineering Sdn Bhd therefore greatly assists its clients in equipment supply, calibration and installation providing that necessary total solution.

- CALIBRATION
- EQUIPMENT INSTALLATION
- DCS & CONTROL PANEL INSTALLATION
- CONTROL CABLE
- CABLE LADDER / TRAY SYSTEM
- TUBING
- AIR PIPING
- LOOP CHECK/PRECOMMISSIONING



### PDH METERING - ELECTRICAL & INSTRUMENTATION SERVICES

Supply & install LV electrical works for oil & gas environment.  
Supply & install instrumentation works for oil & gas environment.



## SCOPE OF WORK

---

C.K. E & I Engineering Sdn Bhd offers a total solution in structured cabling systems which includes a full range of network cables to suit all requirements and budget. (UTP Cat 5 & Fibre Optical cables with accessories), a full range of network components (switches, hubs and patch panels), rack systems, testing and commissioning, and designing and building the actual system.

We also provide support for today's network applications dealing with the upgrade and scaling for emerging high-speed technologies. With our vast selection of networking components which includes cross-connect equipment, information outlets, cable assemblies, connectors and termination products, we are certain that we can help our clientele in resolving all compatibility issues.



**UTP Cable**



**16-Port Switch**



**Rack Mounted Server**



**Fiber Optic cables and Products**

**CURRENT AND COMPLETED PROJECTS** 

| <b>PROJECT</b>   | <b>CLIENTS &amp; YEAR</b>                             |
|--|---|
| ▶ ELECTRICAL & INSTRUMENTATION WORKS FOR NORSOK  | STEELCON HEAT TRANSFER EQUIPMENT – APRILL 2013        |
| ▶ ELECTRICAL & INSTRUMENTATION WORKS FOR GASCO   | STEELCON HEAT TRANSFER EQUIPMENT – MAC 2013           |
| ▶ ELECTRICAL & INSTRUMENTATION WORKS FOR LINDE   | PC INSTALLATION & CONTRACTING SDN BHD – MAC 2013      |
| ▶ ELECTRICAL & INSTRUMENTATION SKID FOR PROJECT (2435-KIMANIS, 2437-PATRICIA, 2438-AZERBAIJAN & 2431 ATTAP VALLEY)                                     | INDEPENDENT TECHNOLOGY SDN BHD - SEPT 2012 & JAN 2013 |
| ▶ SITE MOBILISATION AT KLUANG JOHOR  | HPH M & E SERVICES SDN BHD – JULY 2012                |
| ▶ DISTRIBUTION BOARD FOR KINABALU KNPG-B PROJECT   | OFFSHORE INDUSTRIES SDN BHD – AUG 2012                |
| ▶ CETCO OILFIELD SERVICES (M) S/B-RUBY OFON E&I  | CETCO OILFIELD SERVICES (M) SDN BHD - MAC 2012        |
| ▶ AMPA-09-12 COMPRESSION MODULE DISTRIBUTION BOARD   | OFFSHORE INDUSTRIES SDN BHD – MAC 2012                |
| ▶ TAPIS A ENHANCED OIL RECOVERY (EOR)- E & I INSTALLATION WORKS  | OFFSHORE INDUSTRIES SDN BHD – FEB 2012                |
| ▶ ELECTRICAL & INSTRUMENTATION WORKS FOR LKU-C SIAM LIMITED ( FLSMIDTH - CONTROL PANEL)  | STEELCON HEAT TRANSFER EQUIPMENT – SEPT 2011          |
| ▶ LNG REGASIFICATION FACILITIES PACKAGES (LEKAS)   | INDEPENDENT TECHNOLOGY SDN BHD - SEPT 2011            |
| ▶ ELECTRICAL & INSTRUMENTATION WORKS FOR DESANDING AND DEOILING HYDROCYCLONE PACKAGE & REJECT OIL DRUM-RECYCLE PUMP FOR SAKHALIN LUNSKOYE ( FLSMIDTH ) | STEELCON HEAT TRANSFER EQUIPMENT – MAY 2011           |
| ▶ CETCO OILFIELD SERVICES (M) S/B MONARCH-SEPAT-HYDROCYCLONE   | CETCO OILFIELD SERVICES (M) SDN BHD - MAY 2011        |
| ▶ BEKOK C KERTIH TRANSFORMER & DISTRIBUTION BOARD  | OFFSHORE INDUSTRIES SDN BHD – APRIL 2011              |
| ▶ DB FABRICATION E8K AND E13K FOR SARAWAN SHELL, KENCANA LUMUT PROJECT   | OFFSHORE INDUSTRIES SDN BHD – MAC 2011                |



|   |   |  |
|---|---|--|
| ▶ | EXHAUST FAN MAINTENANCE AT PULAU INDAH FOR 2 YEARS  | SCIENTEX PACKAGING (PULAU INDAH KLANG) – MAC 2011  |
| ▶ | FIBER OPTIC WIRING WORKS AT SOLARIS 2, MOUNT KIARA  | PEOPLE'S COMMUNICATION SDN BHD (PENANG) - JAN 2011 |
| ▶ | ELECTRICAL AND INSTRUMENTATION WORKS FOR LP THE OILLINGWATER HYDROCYCLONE FOR PACKAGE YETAGUN PHASE 4   | STEELCON HEAT TRANSFER EQUIPMENT – JAN 2011        |
| ▶ | WATER BATH HEATER INSTRUMENT & PIPING GSA2  | INDEPENDENT TECHNOLOGY SDN BHD - JAN 2011          |
| ▶ | SUPPLY MANPOWER FOR ABU DHABI JOB   | SYARIKAT STEELCON SDN BHD – DEC 2010               |
| ▶ | PETRONAS-ANGSI PLATFORM-CRUDESEP 6 - INSTALLATION OF PROCESS HOOK - UP TUBING   | CETCO OILFIELD SERVICES (M) SDN BHD - DEC 2010     |
| ▶ | ELECTRICAL WORKS FOR BERJAYA TIMES SQUARE GROUND FLOOR & 1ST FLOOR  | BINA PAR DEVELOPMENT SDN BHD – NOV 2010            |
| ▶ | ANGKASA RAFT – ELEXTRICAL WORKS   | S & V TEKNIK SDN BHD – APRIL 2010                  |
| ▶ | FLSmidth – ICP-R PROCESS PLATFORM   | STEELCON HEAT TRANSFER EQUIPMENT – JAN 2010        |
| ▶ | SYABAS – CABLE INSTALLATION   | PC INSTALLATION & CONTRACTING SDN BHD – OCT 2009   |
| ▶ | ELECTRICAL WORKS FOR BUKIT KIARA CLUB (H)   | BINA PAR DEVELOPMENT SDN BHD – OCT 2009            |
| ▶ | CILI PADI   | OFFSHORE INDUSTRIES SDN BHD – SEPT 2009            |
| ▶ | SUPPLY OF CONSUMABLE MATERIALS, SKILLED LABOUR & TESTING OF INSTRUMENTATION WORKS FOR OSBL & ME PLANT TO THE PROPOSED OLEO CHEMICALS EXPANSION PROJECT (EP2 GLYCERINEPROJECT) | REGELUNG AUTOMATION (SEA) SDN BHD – JULY 2009      |
| ▶ | INSTRUMENT CABLING INSTALLATION WORKS FOR EOX-KUCHING, SARAWAK  | PC INSTALLATION & CONTRACTING SDN BHD – JUN 2009   |
| ▶ | FLSmidth – E&I WORKS FOR WATER DEGASSER PLATONG GAS II  | STEELCON HEAT TRANSFER EQUIPMENT – JUN 2009        |



|   |  |   |
|---|--|---|
|   | CHEVRON  |   |
| ▶ | KREBS OFON CREDESEP - OIL FIELD SERVICES                             | CETCO OILFIELD SERVICES (M) SDN BHD - MAY 2009                            |
| ▶ | CHILLER MOVER  | WOVENTEX SDN BHD, MELAKA - MAY 2009                                       |
| ▶ | FLSmidth – E&I WORKS FOR OILY WATER DEGASSER & PUMP HHI OFON         | FLSmidth gMAX SYSTEMS – FEB 2009  |
| ▶ | DESANDER SKID FOR E & I  | SYARIKAT STEELCON SDN BHD – JAN 2009                                      |
| ▶ | ELECTRICAL RENOVATIONS WORKS (ELECT,CCTV & LAN WORKS)                | TAIKO METALS ENTERPRISE SDN BHD – DEC 2008                                |
| ▶ | ELECTRICAL & INSTRUMENTATION WORKS FOR PLANTONG FSO WATER DISPOSAL   | SYARIKAT STEELCON SDN BHD – DEC 2008                                      |
| ▶ | INSTRUMENTATION WORKS FOR GAS HEATING UNIT STATION – SKID AT SONGKLA | INDEPENDENT TECHNOLOGY SDN BHD – DEC 2008                                 |
| ▶ | INSTRUMENTATION WORKS FOR LOANGO (ENI WATER TREATMENT)               | SYARIKAT STEELCON SDN BHD – SEP 2008                                      |
| ▶ | FLOODLIGHT INSTALLATION AND MAINTENANCE WORKS                        | SCIENTEX PACKAGING (PULAU INDAH KLANG) – SEP 2008                         |
| ▶ | CCTV WORKS AND CARD ACCESS SYSTEM INSTALLATION                       | OFFSHORE INDUSTRIES SDN BHD – AUG 2008                                    |
| ▶ | CCTV WORKS   | SCIENTEX PACKAGING (PULAU INDAH KLANG) 2nd PHASE. 16 NO CAMERA. – JUNE 08 |
| ▶ | MLNG 2 DEBOTTLENECKING (DB) – MIRI SARAWAK                           | OFFSHORE INDUSTRIES SDN BHD – MAY 2008                                    |
| ▶ | FACTORY MAINTENANCE  | SCIENTEX BHD. (PULAU INDAH KLANG) – APRIL 2008 TO JULY 2008               |
| ▶ | RELOCATE PLASTIC EXTRUDER MACHINE                                    | SCIENTEX Bhd-PLASTIC EXTRUSION. MELAKA TO VIETNAM – JAN 2008              |
| ▶ | MAINTENANCE FOR PETRONAS FERTILIZER KEDAH, GURUN                     | OFFSHORE INDUSTRIES SDN BHD – JULY 2007                                   |
| ▶ | TELUK SALUT COMBINED CYCLE -INSTRUMENTATION WORKS                    | RANHILL ENGINEERS CONSTRUCT POWER PLANT, SABAH – NOV 2006                 |
| ▶ | LAN NETWORK IMPLEMENTATION   | SIRIM BUKIT JALIL – OCT 2006  |
| ▶ | CCTV SYSTEM  | SCIENTEX PACKAGING, KLANG -APRIL 2006                                     |





|   |  |   |
|---|--|---|
| ▶ | GAS FIRED DEWPOINT HEATER<br>(INST. WORKS)   | INDEPENDENT TECHNOLOGY SDN BHD<br>– DEC 2005      |
| ▶ | CCTV WORKS                                   | TST SPAREPARTS SDN BHD – OCT 2005                 |
| ▶ | E & I WORKS FOR OFF SHORE SKID               | EXPG ENGINEERING SDN BHD – OCT 2005               |
| ▶ | SIRIM, RASA RAMET FOUNDRY<br>(ELEC. WORKS)   | SIRIM BHD – SEPT 2004                             |
| ▶ | DIESEL COALESCER (MURPHY OIL)<br>INST. WORKS | INDEPENDENT TECHNOLOGY SDN BHD<br>– MAY 2004      |
| ▶ | AMPANG HOSPITAL (ELECT.WORKS)                | BAN GHEE ENGINEERING SDN BHD<br>– JAN 2002        |
| ▶ | KL HOSPITAL (ELECT. WORKS)                   | BAN GHEE ENGINEERING SDN BHD<br>– JULY 2002       |
| ▶ | GIVI CONCESSIONARIES PH3<br>(ELECT.WORKS)    | GIVI - SEPT 2001                                  |
| ▶ | SLUDGE DRYER PACKAGE CUF<br>(INST. WORKS)    | IONICS ENERSAVE ENGINEERING<br>SDN BHD – AUG 2001 |
| ▶ | SWANBANK E POWER PLANT<br>(E&I WORKS)        | INDEPENDENT TECHNOLOGY SDN BHD –<br>JUL 2001      |
| ▶ | MIMIC PANEL (INST. WORKS)                    | OFFSHORE INDUSTRIES SDN BHD –<br>JUN 2001         |
| ▶ | DIESEL COALESCER PACKAGE<br>(E&I WORKS)      | INDEPENDENT TECHNOLOGY<br>– MAY 2001              |
| ▶ | KWSP SERVER ROOM<br>(ELECT. WORKS)           | EXCEL FIRE ENGINEERING SDN BHD<br>– APRIL 2001    |
| ▶ | SHAH ALAM WAREHOUSE<br>(LAN WORKS)           | NATIONAL PANASONIC(M)SDN BHD<br>– MAC 2001        |
| ▶ | PDH KUANTAN (INST.WORKS)                     | KEJURUTERAAN BINTAI KINDENKO<br>– APRIL 2000      |
| ▶ | PDH METERING STATION<br>(E&I WORKS)          | INDEPENDENT TECHNOLOGY SDN BHD<br>– SEPT 1999     |
| ▶ | KERTIH CENTRALISED TANKAGE<br>(INST. WORKS)  | VANTAGE STEEL WORK SDN BHD-DEC 1999               |
| ▶ | KUANTAN-GAS METERING<br>(INST WORKS)         | INDEPENDENT TECHNOLOGY SDN BHD<br>– 1999          |
| ▶ | CUF KUANTAN-GAS METERING<br>(INST. WORKS)    | INDEPENDENT TECHNOLOGY SDN BHD –<br>APRIL 1999    |
| ▶ | MALAYSIAN HOYA LENS (ELECT.<br>WORKS)        | JDC CORPORATION (M) SDN BHD –<br>MAC 1999         |
| ▶ | TITAN LDPE-TANJUNG LANGSAT<br>(E&I WORS)     | SANKO ENGINEERING SDN BHD –<br>JAN 1999           |



|   |  |  |
|---|--|--|
| ▶ | KUANTAN COMPRESSOR STATION (E&I WORKS)           | INDEPENDENT TECHNOLOGY SDN BHD – DEC 1998      |
| ▶ | IMPLEMENT LOCAL AREA NETWORKING FOR ALL BRANCHES | NATIONAL PANASONIC (M) SDN BHD – SEPT 1998     |
| ▶ | KLCC–TWIN TOWER (CCTV WORKS)                     | GEORGE KENT – MAC 1998                         |
| ▶ | SENAI CITY GATE–GAS METERING ( E&I WORKS)        | INDEPENDENT TECHNOLOGY SDN BHD – MAC 1998      |
| ▶ | SERDANG CITY GATE (E&I WORKS)                    | INDEPENDENT TECHNOLOGY SDN BHD – JAN 1998      |
| ▶ | MW POWER STATION PROJECT 1 (E&I WORKS)           | INDEPENDENT TECHNOLOGY SDN BHD – JAN 1998      |
| ▶ | KLCC–CONCERT HALL (ELECT. WORKS)                 | GLATRE SATEC (M) SDN BHD – DEC 1997            |
| ▶ | CLEAN ROOM (ELECT. WORKS)                        | WESTERN DIGITAL (M) SDN BHD – 1997             |
| ▶ | HONG LEONG BUILDING (ELECT. WORKS)               | GUOBENA HEXATECH - 1997                        |
| ▶ | LATERAL GAS PIPELINE SYSTEM (E&I WORKS)          | INDEPENDENT TECHNOLOGY SDN BHD - 1996          |
| ▶ | TV3 BUILDING (ELECT. WORKS)                      | HEXATECH ELECTRIC SDN BHD - 1996               |
| ▶ | MLNG–BOILERS (E&I WORKS)                         | OFFSHORE INDUSTRIES SDN BHD – 1996             |
| ▶ | SUPPLY,INSTALL IMPLEMENT LOCAL AREA NETWORK      | NATIONAL PANASONIC(M)SDN BHD - 1995            |
| ▶ | MALAYSIAN HOYA LENS (ELECT. WORKS)               | JDC CORPORATION (M) SDN BHD - 1995             |
| ▶ | AMOCO CHEMICAL (M) SDN BHD (E&I WORKS)           | TECHNIP FAR EAST (M) SDN BHD - 1995            |
| ▶ | CITY PROPERTY – LRT STATION (ELECT. WORKS)       | JDC CORPORATION (M) SDN BHD - 1995             |
| ▶ | NEG–SHAH ALAM (ELECT.WORKS)                      | SHOWA DENKI (M) SDN BHD - 1994                 |
| ▶ | TORU SENDO (M) SDN BHD (E&I WORKS)               | JDC (M) SDN BHD - 1993                         |
| ▶ | AMPANG HILIR CONDOMINIUM (ELECT. WORKS)          | JDC (M) SDN BHD - 1993                         |
| ▶ | PETRONAS SECOND REFINERY (INST. WORKS)           | JDC (M) SDN BHD - 1993                         |
| ▶ | IMPLEMENT LOCAL AREA NETWORKING                  | MATSUSHITA SALES & SERVICES (M) SDN BHD - 1992 |
| ▶ | S.M.D.S.-JETTY TOP WORKS (INST. WORKS)           | JDC (M) SDN BHD - 1992                         |



|   |                                  |                             |
|---|----------------------------------|-----------------------------|
| ▶ | M.T.B.E., KUANTAN (INST WORKS)   | MITSUBISHI HEAVY INDUSTRIES |
| ▶ | PASIR GUDANG, JOHOR (INST WORKS) | JDC (M) SDN BHD – 1991      |
|   |                                  |                             |
|   |                                  |                             |